

# HEIMBERG

HEIMBERG-QUADRA WALL MOUNTED SHOWER VALVE.



T  
E  
C  
H  
N  
I  
C  
A  
L  
  
D  
A  
T  
A  
S  
H  
E  
E  
T

## SPECIFICATIONS

## TECHNICAL INFORMATION

Product code:	HBM-QUA-170-CP
Finish	Chrome
Product type:	wall-Mounted Shower Mixer Valve
Material	Body: Brass, Cartridge: 35mm Sedal Cartridge
Connection size:	½
Test Range:	0.2-5 Bar
Max Pressure:	16Bar

Hot water inlet temperature: max 90°C

Recommended use (saving energy):60°C

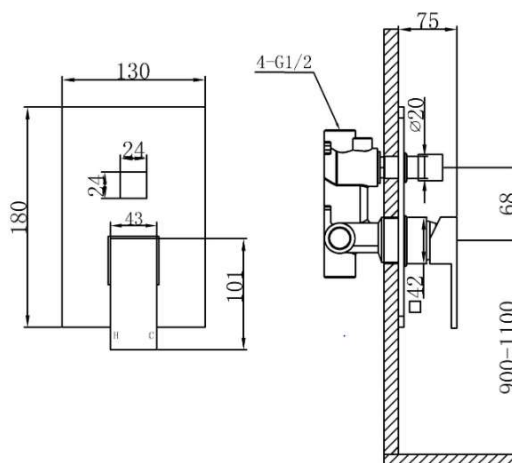
Note: if the static pressure exceeds 5bar, it must be installed a pressure reducing valve, to avoid pressure differences in cold and hot water supply

TECHNICAL INFORMATION: BOX CONTENTS

SHOWER MIXER VALVE: SINGLE HANDLE, FIXING KIT

WITH CONCEALED BOX

## DRAWING



# HEIMBERG

