

HEIMBERG

HEIMBERG-ADVANCE WALL MOUNTED SHOWER VALVE.



T
E
C
H
N
I
C
A
L

D
A
T
A
S
H
E
E
T

SPECIFICATIONS

TECHNICAL INFORMATION

Product code:	HBM-ADV-175-CP
Finish	CHROME PLATED
Product type:	wall-mounted shower mixer valve
Material	body: brass, cartridge: 35mm Sedal Cartridge Top Shower and Hand Shower Brass
Connection size:	½
Test Range:	0.2-5 bar
Max Pressure:	16bar

Hot water inlet temperature: max 90°C

Recommended use (saving energy):60°C

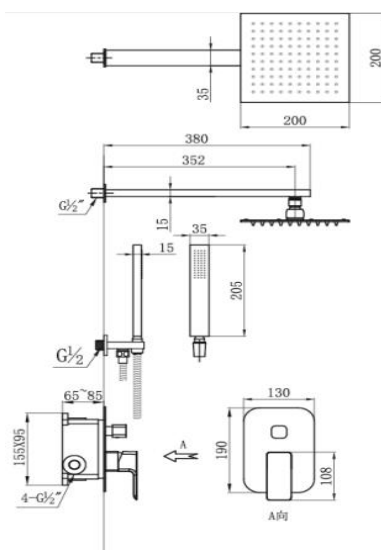
Note: if the static pressure exceeds 5bar, it must be installed a pressure reducing valve, to avoid pressure differences in cold and hot water supply

TECHNICAL INFORMATION: BOX CONTENTS

SHOWER MIXER VALVE: SINGLE HANDLE, FIXING KIT

WITH CONCEALED BOX

DRAWING



HEIMBERG



BRASS BODY

